

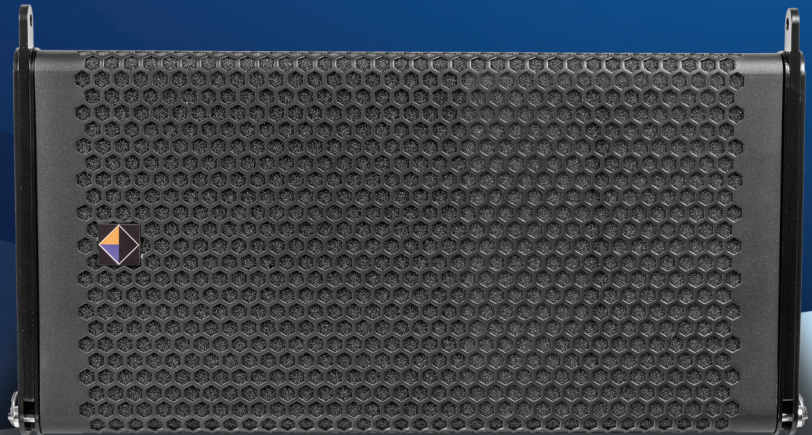
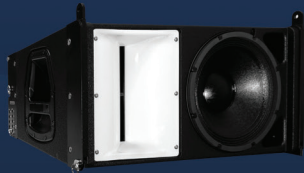
VERTICAL SERIES • ME10V Wide

Compact line-array system with 120° horizontal dispersion

- Custom components.
- Designed for wide horizontal dispersion arrays and for use as down-fill in standard ME10V element configurations.
- Symmetrical L/R design guarantees acoustic symmetry.
- 2-way cabinet (1 x 10", 2 x 0.8" drivers). Passive filter with high phase coherence; crafted with premium electronic components to optimise performance and SPL (137 dB peak at 1 metre).
- HEPC® (High-End Phase Coherence) filter technology.
- Design based on low-curvature flat wavefront.
- Cabinet with asymmetrical pattern of 120° horizontal dispersion.
- Tilt can be adjusted in 9 steps from 0° to 9°.
- Digital laser inclinometer kit for installation in rigging bumper (optional).
- Made with 18-ply Finnish birch wood.
- Finished with a special waterproof polyurea coating resistant to erosion and degradation.
- Robust construction in panels assembled with tongue-and-groove techniques and subsequently glued and pressed.
- Front grid with hexagonal punching and high-resistance epoxy finish.
- Special acoustic foam coating for protection of the loudspeakers against dust and dirt.
- Maga Engineering® limited 5-year warranty.



The white colour of the 120° diffuser distinguishes this version from the standard ME10V.





TECHNICAL SPECIFICATIONS

Frequency response:	50 Hz - 20 KHz
Sensitivity (1 W at 1 metre):	102 dB
Admissible power (continuous):	500 W AES
Recommended amplification:	600 W
Rated impedance:	16 Ω
Maximum SPL:	137 dB peak at 1 metre (with V ₂ filter)
Coverage angle (-6 dB):	Horizontal: 120° / Vertical: defined by the array (min. 20°)
Bass components:	1 x 10" neodymium, 450 W AES
Treble components:	2 x 0.8" neodymium, 40 W AES each

CABINET DIMENSIONS

Front:	576 x 286 mm
Rear:	419 mm
Net weight:	24 kg
Connections:	2 x Neutrik® 4-pole speakON®, +1-1 connection



DIMENSIONS

